

*Where Excellence and Creativity Merge*

# 2020-2021 Re-entry Plans for Fayette County Public Schools



# Reopening Schools

March 12

- Governor Kemp's Executive Order closes schools for the remainder of the year

June 23

- Fayette County Public Schools releases scenarios for reopening school

July 9

- Fayette County Public Schools announces survey options for enrollment: Brick and Mortar or full-time virtual

July 13

- Governor Kemp, State Superintendent Woods, Commissioner Toomey issues enhanced guidance and recommendations for Georgia schools for fall 2020

# Re-entry Plan Priorities

1. Plan for multiple reopening scenarios and contingencies to ensure the health, safety, and well-being of all students and staff.
2. Build a COVID-19 response reopening framework aligned with transitioning scenarios and needs (covering instructional and operational protocols).
3. Ensure students' and families' equitable access to technology required for virtual learning (in distance and brick and mortar options).
4. Provide continuing support to students and adults to address their immediate and long-term physical, psychological, social and emotional needs.

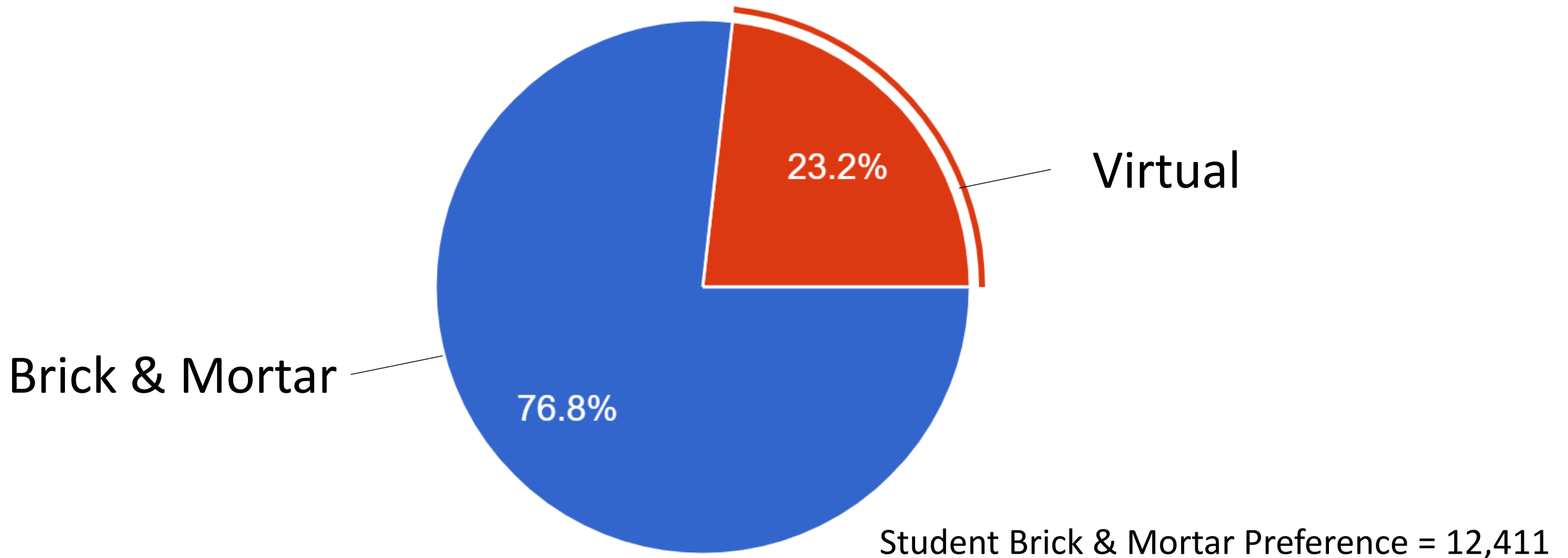
# Re-entry Plan Priorities

5. Create the conditions where all schools are trauma-informed and trauma-skilled in order to address anxiety, grief, and loss (dealing with COVID-19, social conflict, etc.).
6. Prepare for COVID-19 related changes in human resource management and practices.
7. Offer ongoing personalized and differentiated professional learning for staff and parents.
8. Transform the teaching-learning-assessment process to ensure personalization, engagement, competency based and effective differentiation.

# Re-entry Plan Priorities

9. Anticipate COVID-19 related budget and fiscal management issues.
10. Embrace a new paradigm for public education.
11. Highly effective communication that engages and informs all community stakeholders.

# Current Survey Intention Date



Student Brick & Mortar Preference = 12,411

Student Virtual Preference = 3,752

*Data as of July 15, 2020*

# Health and Safety Draft Guidance Document

- Addresses establishment or pre-determined isolation rooms
- Daily random temperature checks
- Daily staff health screening checks – [Staff Exposure Flowchart](#)
- Required face coverings on school buses; strongly encouraged where physical distancing is limited
- Essential visitors – [Student and Visitor Exposure Flowchart](#)
- Recess
- Personal protective equipment (PPE)
- Consideration for meals
- Athletic protocols
- Cleaning and sanitizing
- Instructional considerations



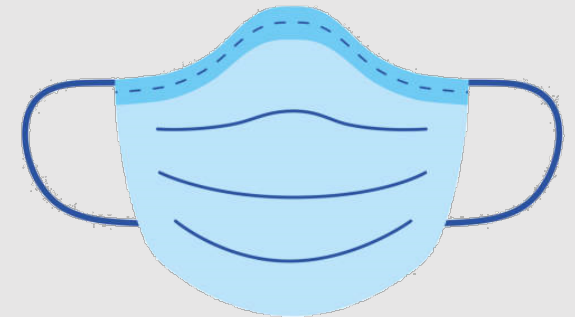
# Health and Safety: Face Coverings

## Draft Administrative Regulations for face coverings to mitigate the spread of infectious disease

*During school bus transportation, face coverings will be required. All students (first grade and above), staff and essential visitors are **highly encouraged** to wear face coverings if the district is operating in **GREEN**, and **required** if operating in **YELLOW** while inside Fayette County Public Schools facilities and where physical distancing is not practical.*

### Exceptions for wearing a face covering:

- Eating and drinking
- Exercising
- Under supervision of school official who directs such
- Health condition
- Communication impairment or disability prevents an individual from wearing face covering
- Children under first grade





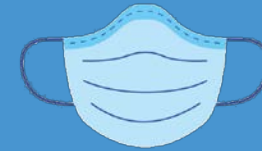
# Health and Safety



Cleaning Supplies	Allocation	Delivery
Hand sanitizer – individual use bottles	1 per teacher	Week of July 20th
Free standing hand sanitizer dispensers with 1 gallon of hand sanitizer per dispenser	5 per HS 5 per MS 3 per ES 1 per clinic	Week of August 7th
Spray bottles with sanitizer	1 per classroom	In place

Supplemental supplies will be available for purchase through the warehouse to ensure bulk rate pricing.

# Health and Safety

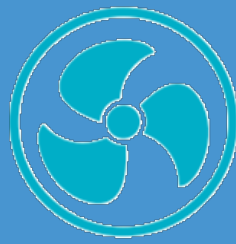


Protective Gear	Allocation	Delivery
Cloth Masks	1 per employee 1 per student	By July 31st
Disposable Masks	All schools and centers	TBD
Face Shields	Special education staff, bus drivers, attendants 65 per HS 50 per MS 30 per ES	Week of July 20th
Temporal Thermometers	5 per HS 4 per MS 3 per ES	Week of July 20th

# Health and Safety

Plexi-Glass Shields	Use	Allocation
Free-standing individual counter shields will be provided to schools and offices where necessary	All schools and offices	As needed
Individual face shields, where counter shields are not practical	Front office staff, bus drivers, nurses	As needed





## Air Quality

- Follow CDC and Georgia Department of Public Health guidance to reduce the risk for exposure to coronavirus
- Install bi-polar ionization modules in all schools' HVAC systems
- Conduct enhanced preventative maintenance on all mechanical, electrical, HVAC, and plumbing systems – including replacing air filters
- Work closely with the Fayette County Health Department (FCHD) to communicate the latest health information to staff and community to better prepare for returning to school
- Continue to monitor emerging information from health experts related to HVAC

# Health and Safety: When a student, staff member or visitor becomes sick at school

If there is a confirmed case of COVID-19 in school, the Health Department will work closely with school administrators to determine a course of action for the school.

The process will be as follows:

- Isolate and place surgical mask on the sick person
- School nurse will assess and interview the sick person
- Georgia Department of Public Health Guidelines will be given verbally and in writing
- The health department will be notified and school nurses will assist with contact tracing
- Follow public health guidance
- Communicate to parents/guardians and staff members potentially exposed

# Health and Safety: School Closures

Decisions on classroom or school closures need to be made on a case-by-case basis and in consultation with the Health Department.

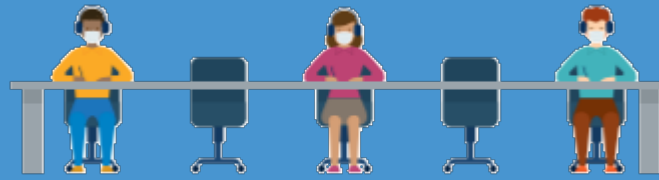
Factors to be considered:

- The size of the class
- Extent of social distancing in place while the ill persons were present and infectious
- Extent of interactions and exposure in the area
- Location of the case(s) in the class need to be assessed to determine the potential risk to others
- Positive confirmed cases and spread in Fayette County will also be a variable factored into school closure considerations

Further reference:

- [CDC Contact Tracing Workflow](#)
- [CDC Case Investigation Workflow](#)

# Social Distancing



FCPS goal will be to use social distancing in setting up classrooms wherever possible per CDC guidelines



# School Start and End Time Schedule

Start and End Times	
Elementary	7:40 – 2:25
Middle	8:10 – 3:10
High	8:35 – 3:45

## Rationale:

- Many families and teachers will make decisions based on the start and end times
- Many families and teachers will make day care arrangements based on the schedule
- Athletics and after school activities will be impacted by end times
- Many of our students will need to work after school
- High and middle school students may need to be home to watch their elementary siblings



# A/B Hybrid Schedule for Moderate Spread (Yellow)

A/B Hybrid Schedule	
Description	<ul style="list-style-type: none"><li>• A combination of face-to-face instruction and asynchronous learning</li></ul>
Benefits	<ul style="list-style-type: none"><li>• Face-to-face instruction two days per week with smaller groups of students</li><li>• Less hallway traffic and mixing of students due to reduced numbers in the building</li></ul>
Challenges	<ul style="list-style-type: none"><li>• Students are in class only two days per week</li></ul>

M/Tu and Th/F were chosen to increase the time between in-person days. Wednesdays will serve as a “flex” day for students and staff as well as an opportunity for extra sanitation in the school building.

# Hybrid A/B Schedules (Yellow)

Students will be divided into two groups (A or B). Grouping will be based on household to keep students in the same family on the same schedule.

- Schools will adjust as necessary for special programs, being mindful of transportation limitations

# Distance Learning (Red)

Distance Learning	
Description	<ul style="list-style-type: none"><li>• Face-to-face instruction is replaced with virtual instruction</li></ul>
Benefits	<ul style="list-style-type: none"><li>• Learning continues</li><li>• No physical contact student-to-student or student-to-teacher to reduce the chance of infection or spread</li></ul>
Challenges	<ul style="list-style-type: none"><li>• Requires more independent learning by students and engagement by parents</li></ul>

# Full Time Virtual School

Full Time Virtual School	
Description	<ul style="list-style-type: none"><li>• Instruction for all courses is virtual*<ul style="list-style-type: none"><li>• Elementary/middle school – content is developed and delivered by Fayette County teachers. A combination of synchronous and asynchronous learning activities.</li><li>• High school – most courses delivered through Edgenuity curriculum. Some courses will be developed and delivered by Fayette County teachers. All learning will be asynchronous.</li></ul></li></ul>
Benefits	<ul style="list-style-type: none"><li>• Anytime/anywhere learning</li><li>• Limited physical contact student-to-student or student-to-teacher to reduce the chance of infection or spread</li></ul>
Challenges	<ul style="list-style-type: none"><li>• Requires more independent learning by students and engagement by parents</li></ul>

\*High school students may attend select courses at their home brick and mortar school.

# Courses & Programs That Will Be Offered Virtually

Level	Course/Program	
Elementary school programs that must be available to students in person and online	<ul style="list-style-type: none"> <li>• EIP</li> <li>• ESOL</li> <li>• Special Education</li> </ul>	<ul style="list-style-type: none"> <li>• Specials – Art, Music, or PE</li> </ul>
Middle school courses/programs that must be available to students in person and online	<ul style="list-style-type: none"> <li>• Electives*</li> <li>• ESOL</li> <li>• Special Education</li> </ul>	
High school courses/programs that must be available to students in person and online	<ul style="list-style-type: none"> <li>• Required courses</li> <li>• AP &amp; IB*</li> <li>• Electives*</li> <li>• ESOL</li> </ul>	<ul style="list-style-type: none"> <li>• Dual Enrollment</li> <li>• Special Education</li> <li>• CTE*</li> </ul>

\*Specific course offerings in-person and virtual will be dependent on student enrollment and ability to provide appropriate staffing in each setting for each course.

# Courses & Programs Not Offered or Modified

Level	Course/Program
Elementary school course/programs unavailable online or in-person	Gifted offerings will be provided based on availability of staff.
Middle school courses/programs unavailable online or in-person	Schools will offer courses/programs in person based on student enrollment requests and availability of virtual teacher. Gifted offerings will be provided based on availability of staff.
High school courses/programs that are only available in-person*	Schools will offer courses/programs in person based on student enrollment requests and availability of in-person teacher. Gifted offerings will be provided based on availability of staff.
High school courses/programs unavailable online*	Performing arts, certain CTE courses, and elective courses for which virtual staff is unavailable. Ninth and tenth grade gifted courses are not offered virtually.

\*Additional specialized courses, such as certain Career and Technical Education classes that require access to specialized equipment and/or clinical hours may be impacted (licensure and pathway completion).

# In-Person and Online Comparison

- All students will have access to quality instruction at both the brick and mortar school and the full time virtual school.
- Teachers will have opportunities to collaborate for aligning content, pacing, and assessment.
- All students will have access to Fayette County teachers for support.
- Schoology will be the learning management platform used by students, parents, and all teachers.



# Preparing to Pivot to Distance Learning (Red)

- In the event of state mandated closure/phase guidance, FCPS will implement a flexible model of virtual instruction for all students (Red).
- Safety Protocols: no students in buildings, staff access when needed
- Face-to-face instruction is replaced with virtual instruction
- All teachers continue to be trained on effective virtual teaching and learning in order to enhance the model used during previous school closure in the spring of 2020.
- Students will use their Schoology account to access virtual instruction.
- Appropriate schedules will be developed for each level (ES, MS, HS).





# Family Engagement

A variety of strategies are in place for family engagement during virtual learning, including but not limited to:

- Training for families on Schoology (the district's learning management platform).
- Regular two-way communication with teachers and schools.
- Ongoing workshops on a variety of topics of interest and need, such as social emotional learning, maintaining wellness, and more.
- Translation resources and other supports will be provided when available.
- Access to staff is available by appointment only.

# Special Education

- Special education and related services will be provided in accordance with IEPs or distance learning plans.
- Students with disabilities will be included in the options that are available for all students.



# Employee Child Care Option

An option for providing childcare for FCPS employees with school-aged children attending FCPS schools is under consideration

Option: Provide day care to FCPS students (grades preK-5) who are children of FCPS staff that are essential for reopening schools:

School-based staff (e.g., teachers, administrators, custodians, cafeteria workers, bus drivers) and other FCPS staff that support schools (e.g., psychologists, social workers)

*Analysis is needed on fall enrollment intent to determine our ability to commit providing childcare under this option. Local school-based options are being explored to provide childcare on Mondays.*

# Sports and Activities

- Currently FCPS has started conditioning and agility drills for athletics. Plans are in place to move forward with allowances based on guidance from Georgia High School Association (GHSА) and Georgia Department of Public Health (GaDPH).
- The GHSА executive committee will continue to discuss plans for the fall sports season.
- Planning for different scenarios of the fall season will be announced pending guidance from the GHSА.
- Band information will be communicated when the fall marching band season is determined.



# Clubs and After School Activities

- Clubs may meet both in person and in a virtual setting based on appropriate protocols. Proper accommodations will be available to allow clubs to remain active.
- Middle school after school activities will follow similar protocols developed in conjunction and where appropriate with the feeder high school to allow for continuity of programming.



# Return to School Enrollment

Reminder: Complete the choice enrollment survey  
by

**Wednesday, July 22<sup>nd</sup>**

**[FCPS School Choice Survey](#)**

# Informational Links

- [School Choice Survey](#)
- [Protocols](#)
- [Re-entry plan continuum](#)
- [FAQ](#)
- [System website](#)
- [Full Time Virtual School Application](#)